



BARDIA PUBLIC SCHOOL NEWSLETTER

Macdonald Road
BARDIA NSW 2565
9605 2459

'THE BUGLE'



Term 1 – Week 4 – 2016

Message from the Principal

Dear members of the Bardia Public School community,

Welcome one and all to the second newsletter of 2016. There is lots of information in this newsletter so read on!

Please make a contribution to your child's education. The voluntary fee we ask for has not changed for a number of years: \$40 for an individual child and \$70 for two or more children. Granted, this is not very much compared to private schools' ridiculous fees; however, this small amount of money is VERY important to our being able to provide your child the latest and the best educational resources. Please help us!

Do you want to help your child to become a fantastic learner? Watch this video:

<https://www.youtube.com/watch?v=B8JM2U4qh5I&feature=youtu.be&t=6s>

Please remember that you must be here at 3.00pm each afternoon to collect your child. There is no afternoon supervision provided. If you are going to be late regularly you should enrol your child in our After School Care. If there is an emergency and you will be unavoidably late, please ring the school and let the office staff know.

FEBRUARY

Wednesday 17th: **Swimming Carnival** (Year 2 students turning 8 in 2016 can attend. Attendance at the carnival is compulsory for Year 3 to Year 6).

Thursday 25th: **ASSEMBLY** All Welcome (2:10pm)

MARCH

Tuesday 8th: **Police Talk** to Years 5 and 6

Thursday 10th: **ASSEMBLY** All Welcome (2.10pm)

Thursday 10th: **P&C Meeting** – ALL WELCOME

Tuesday 15th: **Year 1 and 2 Excursion to Fairfield City Farm**

Thursday 24th: **Author Visit**

Thursday 24th: **Easter Hat Parade**

Friday 25th March to Monday 28th March EASTER BREAK

Wednesday 30th: **Pedagogy for Parents: What is Teaching?**

Thursday 31st: **Harmony Day** All Welcome

Thursday 31st: **ASSEMBLY** All Welcome (2.10pm)

APRIL

Tuesday 5th: **Term 1 Student Reports** sent home

Wednesday 6th: **Photo Day**

Wednesday 6th: **Parent-Teacher Interviews**

Friday 8th: **LAST DAY OF TERM 1**

P&C EVENTS

(notes with more information will be sent out closer to the date)

Current: Chocolate fundraiser. Boxes can be collected from the front office.

1st - 24th March: Easter egg guessing competition.

3rd March: Easter raffle tickets sent home.

10th March: P & C meeting (6:15 p.m.). All welcome

31st March: Harmony day BBQ

Disclaimer:

Bardia Public School does not endorse any product or services advertised in this newsletter.

Are you puzzled by modern education? Do you know what your child's teacher does to improve your child's learning? Do you know what the following refer to and do you understand how they impact on your child?

Differentiation. Guided Reading. Visible Learning. Growth Mindset. Composite classes. Streaming. Mixed Ability.

Last year I ran a one-off information evening titled **Pedagogy for Parents: What is Learning?** This was a great success and at last I am able to offer another information evening. This one is titled **Pedagogy for Parents: What is Teaching?** If you wish to find out just how dramatically different teaching is compared to when you were in primary school please come along to what should be an enjoyable and informative evening. Light refreshments will be provided.

What – Pedagogy for Parents: What is Teaching?

Who – Presented by Mr Moseley

When – Wednesday 30th March 6.00pm to 7.30pm

Where – In the school library

Year 5 and 6 parents and carers: worried about your child going to high school? Ingleburn High School is running a "get to know high school" session on Tuesday March 22nd from 5.30 to 7.00pm. All Year 5 and 6 students and their parents/carers are welcome to enjoy a range of hands-on activities that will have you much better informed about what to expect in high school.

For everyone, particularly our new parents, the following advice is offered out of my concern for the safety of your children and you. **We have had numerous incidents in the car park and along Macdonald Road in the past few years** and with our school growing, the dangers will only increase. I have no power to prevent risk taking and the police are not here every day; in short, once you collect your children it is up to you to keep them safe.

Did you know that **there are three car parks at BPS** and that each of them has particular rules to keep you and your children safe? Did you also know that approximately 20 people a year are killed or seriously injured by moving vehicles in car parks in NSW?

Parents' Car Park: This is the largest car park to the south of the school. We are one of a very small number of primary schools in NSW to have a parents' car park. Yes it can be a little difficult to negotiate (especially when muddy) but we are lucky to have it! **RULES:** *please drive VERY slowly (5kph); only reverse park against the wall; do not park near the bus stop or block the area at the end of the car park near the trees where the bus turns around. Watch out for children at all times!*

Staff and Deliveries Car Park: This car park is located next to the Admin Office at the northwest corner of the school. ***Under no circumstances should this car park be used by parents or volunteers – at any time!***

Before and After School Care Car Park: This car park is located between the large rubbish bins, the hall and the Before and After School Care. This car park **MUST NOT BE USED** by anyone other than BPS staff and After School Care workers and two parents whose children have disabilities. *This is a thoroughfare for pedestrians and the chances of hurting a child should you use this car park are extremely high!*

Street Parking: This is not recommended. Inadvertently people who do this park on the foot path (parents have been fined for this by the Police in the past). Crossing Macdonald Road to get to your vehicle is dangerous and cars being side swiped by passing vehicles has occurred here in the past.

Note: Students are NOT permitted to leave the school unaccompanied by an adult. You should not sit in your car and expect your children to make their way to you unescorted by an adult. The students have been instructed that they are to wait on the silver seats until their parent/carer collects them. The students have been informed that to do otherwise is against school rules.

Please help us to keep EVERYONE safe by following these *common-sense* rules, by remaining patient and courteous and by being considerate of others. Thank you.

So, in summary:

1. **Drive slowly = 5km**
2. **Do not park or drop your child off in the car park where the large bins are positioned**
3. **Do not park or drop your child off near the bus bay**
4. **Stop at the crossing and look out for children – especially when reversing!**
5. **Always keep a sharp eye on your children in the car park**
6. **Always park your car and walk your children **to** or **from** the school**
7. **Park rear to the school hall**

School Student Transport Scheme (SSTS) Student Opal Card



Interline Bus Services has informed us that as from Monday 15th February, 2016 drivers will be asking students with an opal card to tap on and tap off.

This will be a trial for when the moratorium finishes on the 1st of March, 2016.

They ask that all students who currently have an opal card tap on when entering the bus and tap off before departing the bus.

If they are ineligible for free school travel there are two options available:

1. Purchase a term pass opal card
2. Purchase a child/youth opal card

It is strongly recommended that for non-eligible students that an opal card is acquired as paying cash will be a more expensive option to them.

FROM THE OFFICE

Tissues



URGENT! We have run out!

It would be appreciated if families would pop a box of tissues into their shopping trolley next time you are shopping to build up our supply. Boxes can be sent to the office.

Thank you in anticipation.

Office staff.

CRAFT SESSIONS

We are running craft sessions during the lunch period. If you have any craft items you could donate (e.g. wool, knitting needles, ribbon etc.) please hand in to the office.

All donations welcome.
Mrs. White – SLSO



School Banking

Wednesday is school banking day and students should bring in their weekly deposit to the front office before 9:00 a.m.

For every deposit made at school, no matter how big or small, students will receive a cool Dollarmites token. Once students have individually collected 10 tokens they can redeem them for a school banking reward item in recognition of their continued savings behaviour. Remember our school earns 5% commission on every deposit made (to a maximum of \$10 per individual deposit). Thank you for supporting the School Banking program at Bardia Public School.

HELP!

The office spare clothing is in desperate need of small trackpants and jackets. If you have any items that you could donate please see the ladies in the office.

Nutrition Snippet

The simplest way

...to keep lunch foods fresh.

Food packed at home in the lunch box needs to stay fresh and safe to eat at school.

Meat, fish, poultry, eggs, noodles, rice, pasta, custard, yoghurt, cheese and milk need to be kept very cold to prevent food poisoning.

Pack lunches in a cooler bag with a cold brick.

Freeze items such as sandwiches, milk poppers, yoghurt, custard tubs, muffins, or fruit segments to pack on hot days.



For more information visit
www.eatittobeatit.com.au
or join us at facebook.com/eatittobeatit



Nutrition Snippet

The simplest way

...to save time packing lunches.

We know parents are eager to pack healthy, nutritious lunches.



But doing it five times a week, and getting the kids keen on healthy options such as fruit and vegetables, can feel like a chore.

Plan ahead to get organised and save time:

- Make sandwiches at the beginning of the week and freeze, then add fresh salad on the day.
- Cook extra at dinner and use leftovers for lunches - baked veg, stir fry, pasta and rice work well.
- Chop up sticks of carrot, capsicum, celery or cucumber and store in a container in the fridge until ready to use.

Let the kids help prepare and select, saving you time and getting them interested.

For more information visit
www.eatittobeatit.com.au
or join us at facebook.com/eatittobeatit



Library News



Borrowing

Each class has a weekly 1 hour library and borrowing time. During this session the children are allowed to borrow 2 books for one week if they bring their library bag. This year in Years 3-6, the students will also be borrowing for their home reading, which is part of their homework. The children are also allowed to borrow during the second half of lunch on Tuesday.

Class library days

Tuesday	Wednesday	Thursday
KW	KA	1/2H
K/1M	1/2G	1/2L
4/5M	3/4P	
5/6M	3/4D	

Library Bags

As mentioned the children need library bags to borrow books to take home. This bag does not have to be fancy as long as it is labeled. It can even be an old pillow case. We only ask that it not be a plastic bag for health and safety reasons.

Premiers' Readers Challenge

The challenge begins in February and finishes on the 1st of Sept and requires the children at different age groups to read a certain number of books from the list provided. All children will be participating during library and class time. The children in the K-2 classes will have the books read to them by their class teachers and recorded as a whole group. The 3-6 children will keep their own records during library time. The students will be starting their challenge next term. For more information about the challenge please see:

www.schools.nsw.edu.au/premiersreadingchallenge/index



Chess Club

The library is open the whole of lunchtime on Thursday for chess club. First term the children will be learning and anyone can come in and play. In second term the children will be asked to sign up for chess club and will be making a commitment to play each week. Occasionally the school will compete in outside events and the students in chess club will be asked to join these groups. If you have any questions concerning chess club please feel free to contact me at school on 96052459. The following article gives you an understanding of the benefits of your child playing chess.

http://www.nswicl.org.au/Resources/Dauvergne/PD_paper.htm

Help Needed!!

Each Thursday I am in the library from 2pm-3pm and a number of parents come in to help tidy shelves before school pickup. Everyone is welcome and it is a great way to get involved and meet other parents, have a cuppa and check out a small adult library. It's also cool in the library and pre-schoolers are welcome too!



If you're not able to help at this time maybe you could come and help at another time or take books home to cover. Please feel free and come in and have a chat about when you're able to help.

Internet Safety and Usage

Bardia PS has a strong policy concerning the appropriate usage of the school internet by students. Each year we conduct sessions during ICT explaining how to use the internet safely and how students are to conduct themselves using computers including email at school and at home. We do not tolerate any bullying, if a student uses the computers or DET portal inappropriately parents will be contacted and they will lose their internet rights for the continuation of that school term. It is important that we send a strong message to our children concerning this matter. The students from grades 3-6 will be bringing home a contract which they have written explaining the appropriate behaviour we are expecting, including the use of communicating with peers through x-box live. If you are having issues concerning computer safety i.e. students over-use, safe web browsing, usage of x-box live please come and discuss it with myself or Mr Moseley. I will be able to help you change the settings on the computer that can lock out children at certain times of the day as well as other tricks to keep them safe. The following website gives excellent information and guidelines for children using computers and the internet.

<http://www.schoolatoz.nsw.edu.au/technology>



"There is more treasure in books than in the entire pirate's loot on Treasure Island." — Walt Disney

Happy Reading

Mrs. Kathy Wyber



The school has applied to become a member of the Amart All Sports Community Kickbacks Program. Customers of Amart All Sports can elect Bardia Public School to receive credits against purchases made.

You will need to join the Amart All Sports Team Amart Loyalty Program and nominate Bardia Public School as your "Relevant Participating Club or School".

You will receive a loyalty program card which must be swiped or selected when purchasing goods in store or on-line in order for the school to accrue credits. Once the school's credits reach \$2000 (ex GST) within a 12 month period the school will receive a 5% store credit (\$100).

This is a convenient way for the school to acquire sporting equipment for the benefit of all our students.

Bardia Public School
P & C Association

P&C NEWS



Bardia Public School P & C now on Facebook

"Like" our page to keep updated on:

1. Events happening at the school such as assemblies, Easter hat parades, cake days etc;
2. Fundraising events;
3. Uniform changes and updates;
4. Canteen changes – menu, new products, opening times;
5. Play group for parents and carers with children 5 years and under.

All that and more at <https://facebook.com/ingleburnnorth>

Canteen

The canteen will be closed every Tuesday until further notice. The canteen is open every other day for lunch and closes at 12pm except for Wednesday when it will be also open at recess.

A wonderful way to be part of the school community is through volunteering. We currently have some amazing volunteers in our canteen to ensure we have canteen facilities for our students. No experience necessary. If you are able to donate any of your precious time, please contact the canteen or office staff. Your children also gain a sense of pride when their parent helps at the school.

ADVERTISEMENTS

Now enrolling
for 2016

Join our growing community

SIENNA
Art Space

We're expanding in 2016!

Weekly art classes on
Saturdays and Mondays!

New Youth Workshops!

Enrol today: Erin 0433 944 041

Forms available on the website.



Studio Classes in Drawing & Painting for Kids, Teens & Adults
Art Circuits for Kids - Youth Workshops - Women's Circle Workshops

SIENNA Art Space www.siennaartspace.com



TENNIS COACHING

- 3-5 Years Pre-School Program
- 5-12 ANZ Hots Shots
- 10 Years + Junior Development Program
- Adult Social Tennis
- Junior Competitions and Tournaments
- Private and Group Classes

JOIN NOW for terms 1 and 2 and you will receive a **FREE** Junior Tennis Racquet (Valued at \$29.95) Limited Spaces Available.

NOW TAKING ENROLMENTS AT

- Bow Bowling Tennis Centre - 10 Carnarvon St, Bow Bowling
- Ingleburn Tennis Centre - Macquarie Fields Leisure Centre

Contact: **RICKY - 0409843403**

NOTICES

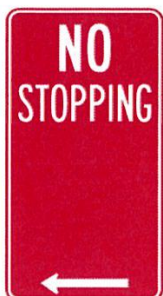


First Holy Confession and Holy Communion

Catholic children in NSW state schools in Year 3 or over are due to be prepared to receive the Sacraments of Forgiveness and Holy Communion. An enrolment and information meeting for parents will be held on Monday 15th February at 7.30pm in the Parish Centre of the Holy Family Church, Oxford Road, Ingleburn. Baptism certificates are required for enrolment. For enquiries please contact Father Peter on 9605 2785.

SCHOOL ZONE PARKING OFFENCES

Current as at 1 July 2015



Means that in the area in the direction of the arrow, you must **NOT STOP your vehicle** at any point on the road or kerb, unless there is a medical or other emergency.

Maximum Penalty

\$425

+ 2 Demerit Points

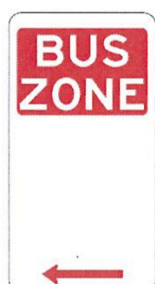


Means that you have no more than 2 minutes for drop-offs or pick-ups of passengers or goods and the driver must stay within 3 metres of your vehicle.

Penalty

\$177

+ 2 Demerit Points

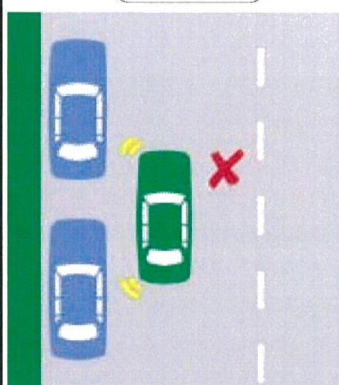


Means that in the direction of the arrow or arrows you are not allowed to stop your vehicle unless you are driving a bus.

Penalty

\$319

+ 2 Demerit Points



DOUBLE PARKING

You are **NOT PERMITTED** to stop or park your vehicle alongside another vehicle that is already parked parallel to the kerb.

Penalty

\$319

+ 2 Demerit Points

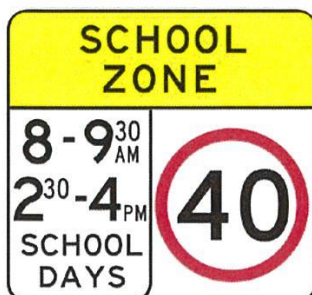
- STOP in a NO STOPPING zone: **\$319 + 2 Demerit Points**
- STOP on or near a Children's or Pedestrian Crossing (within 20m on approach & 10m on departure side of crossing): **\$425 + 2 Demerit Points**
- STOP on path/strip in built up area: **\$177 + 2 Demerit Points**

Please Note: fines subject to change without notice.

These penalties apply to offences in school zones only while the zone is active.

SCHOOL ZONE TRAFFIC OFFENCES

As at 1 July 2015



SPEEDING OFFENCES

School Zone speeding offences attract higher fine and demerit points than other speeding offences.

Maximum Penalty

\$3,740

+ 7 Demerit Points



MOBILE PHONE USE

Drive using a hand-held mobile phone in a School Zone.

Penalty

\$425

+ 4 Demerit Points



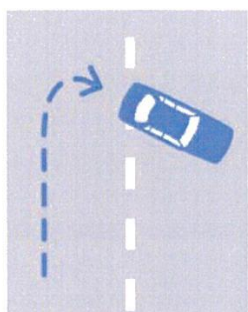
CHILDREN'S CROSSINGS

Disobey hand-held stop sign at Children's Crossing or approach Children's Crossing too quickly to stop safely.

Penalty

\$531

+ 4 Demerit Points



U-TURNS

Make a U-Turn without giving way to pedestrian or vehicle in a School Zone

Penalty

\$425

+ 4 Demerit Points

For a full list of all new penalties and offences, please visit:
www.rms.nsw.gov.au or phone the RMS on: 13 22 13

Please Note: fines subject to change without notice.

These penalties apply to offences in schools zones only while the zone is active.