



BARDIA PUBLIC SCHOOL NEWSLETTER

Macdonald Road
BARDIA NSW 2565
9605 2459

'THE BUGLE'



Term 1 – Week 2 – 2016

Message from the Principal

Dear members of the Bardia Public School community,

Welcome to the first newsletter of 2016 and an especially warm welcome to all of our new parents and carers. Already we have about 60 new students! Of course that means that many of you will be needing lots of information.

The quality of the education we provide your children is increased dramatically because of your fundraising. In the past you have enabled the school to purchase air conditioners for every class in the two main blocks (the Dept. of Ed. provides air con. for demountable classrooms). You have also enabled us to establish two mobile tablet (ICT) labs – soon to become three!

However, your children would NOT have these great supports to their learning if it were not for your Parents & Citizens Association (P&C). But we have a problem. We have the SAME small number of parents helping out that we had 10 years ago. Back then the school had 130 students. Now we have 245 students! **Our school needs your help!** Please consider joining the P&C and if this is not possible please consider volunteering to help out in the canteen.

FEBRUARY

Tuesday 8th: **Kindergarten whole day attendance**

Wednesday 10th: **Meet the Teacher Night**

Thursday 11th: **ASSEMBLY** Captains' Inauguration (starts at 2.10pm ALL WELCOME)

Thursday 11th: **P&C Annual General Meeting** ALL WELCOME

Wednesday 17th: **Swimming Carnival** (Year 2 students turning 8 in 2016 can attend. Attendance at the carnival is compulsory for Year 3 to Year 6).

Thursday 25th: **ASSEMBLY** All Welcome (2:10pm)

MARCH

Tuesday 8th: **Police Talk** to Years 5 and 6

Thursday 10th: **ASSEMBLY** All Welcome (2.10pm)

Thursday 10th: **P&C Meeting** – ALL WELCOME

Tuesday 15th: **Year 1 and 2 Excursion to Fairfield City Farm**

Thursday 24th: **Author Visit**

Thursday 24th: **Easter Hat Parade**

Friday 25th March to Monday 28th March EASTER BREAK

Thursday 31st: **Harmony Day** All Welcome

Thursday 31st: **ASSEMBLY** All Welcome

APRIL

Tuesday 5th: **Term 1 Student Reports** sent home

Wednesday 6th: **Parent-Teacher Interviews**

Friday 8th: **LAST DAY OF TERM 1**

Disclaimer:

Bardia Public School does not endorse any product or services advertised in this newsletter.

It is a fact of life in our modern world that our children's health is often quite delicate. At BPS we have six students who are at risk of **severe anaphylaxis**. For these little people simply touching a nut could result in a serious medical emergency. For this reason we ask our community to please help keep these children safe by making BPS a **nut free zone**. However, many foods now contain traces of nuts. The only way to be sure that the food does not contain nuts is to read the label carefully.

It is also true that we have a fairly large number of students with moderate to severe allergies. Carpet mites, dust, grass seeds, gluten, milk, insect bites, etc. could cause these children to break out in welts, have difficulty breathing, vomit and suffer headaches. In some circumstances these children could also suffer anaphylactic shock.

Every member of staff at BPS is trained annually in determining the signs of anaphylaxis and in using an epipen. An epipen carries a small dose of adrenalin and has been shown to be very effective in countering anaphylaxis.

What can you do to help?

1. **Please do not send foods containing nuts to school.**
2. **Please ask your child NOT to share food at school.**
3. **Please let us know (if you have not already done so) about your child's health conditions.**
4. **If your child is at risk of anaphylaxis, please make sure that you provide a health care plan signed by your child's doctor and an up-to-date epipen.**
5. **Please ensure that your contact details are up-to-date.**

As serious as the above is, if we all work together to protect our children I am confident that we can keep them safe.

A teacher undertaking **professional development** is the best way to improve his or her students' learning. Such additional training ensures that the teacher is continually up to date with the latest teaching methods. As was the case last year, instead of holding two staff development days at the end of the year (*when we are exhausted and face a five week gap before we can practise our new skills*) the teachers will be attending four half-day evening sessions (*in lieu of the two staff development days at the end of the year*), two staff development days in Term 2 and Term 3 and approximately three out of class professional development days. The teachers will also be attending 16 one-hour after school professional development sessions. In total this amounts to approximately nine full days of professional development. This is not as much professional development as teachers in other OECD countries experience, but it is a huge improvement on years past.



We are advising that there has been a suspected case of chicken pox within the school. We request that if your child shows any symptoms please have them checked by your doctor.

If you have any questions, please contact us at the Office.

**IMPORTANT
CHANGES!**

School Student Transport Scheme (SSTS) Student Opal Card



From Term 1 2016 Transport for NSW will be issuing school opal cards to students eligible for travel under the (SSTS) via a new online application process.

The application form can be found at www.transportnsw.info/school-students.

Most students who already have a school student travel pass will automatically be issued with an opal card at the beginning of 2016 with the following exceptions:

- Moving from Year 2 to Year 3 (change to the minimum walking distance)
- Moving from Year 6 to Year 7 (change to the minimum walking distance)
- Change of address
- As a result of a new shared parental responsibility situation.

Application process:

Applicants will need an email address to complete the form.

Step 1: Parents/guardians (or students over 16 or over) first fill in the online application form at www.transportnsw.info/school-students.

Step 2: Print and sign the form and submit to the school for endorsement.

Step 3: The school will then forward the application to Transport for NSW for processing. If the application is approved a school opal card will be sent to the address given in the application form.

The application process may take several weeks. Students will be informed of the outcome of their application by email.

FROM THE OFFICE

Tissues



URGENT! We have run out!

It would be appreciated if families would pop a box of tissues into their shopping trolley next time you are shopping to build up our supply. Boxes can be sent to the office.

Thank you in anticipation.

Office staff.

CRAFT SESSIONS

We are running craft sessions during the lunch period. If you have any craft items you could donate (e.g. wool, knitting needles, ribbon etc.) please hand in to the office.

All donations welcome.
Mrs. White – SLSO



School Banking




Wednesday is school banking day and students should bring in their weekly deposit to the front office before 9:00 a.m.

For every deposit made at school, no matter how big or small, students will receive a cool Dollarmites token. Once students have individually collected 10 tokens they can redeem them for a school banking reward item in recognition of their continued savings behaviour. Remember our school earns 5% commission on every deposit made (to a maximum of \$10 per individual deposit). Thank you for supporting the School Banking program at Ingleburn North Public School.

HELP!

The office spare clothing is in desperate need of small trackpants and jackets. If you have any items that you could donate please see the ladies in the office.




Nutrition Snippet

The simplest way

...to bake a healthy lunch box treat.

Homemade muffins are a great way to add a fruit or veg-filled treat to lunch boxes.


Apple and date muffins




Ingredients: 3 apples, chopped; 1 cup boiling water; 200g dates, chopped; 50g butter; 2/3 cup brown sugar; 2 tsp mixed spice; 1 egg; 1 tsp baking soda; 1 tsp baking powder; 2 cups wholemeal flour.

Method: Preheat oven (180°C). Chop apples and dates. Add boiling water, butter and sugar. Mix until butter melts and sugar dissolves. Add spice and allow to cool. When fruit mixture is warm, not hot, add spice and egg. Mix well. Add baking soda, baking powder and flour. Mix, but do not overbeat. If mixture is too dry, add a little milk. Spoon into the prepared muffin tin. Bake for about 15 minutes.

For more information visit
www.eatittobeatit.com.au
or join us at facebook.com/eatittobeatit





Nutrition Snippet

The simplest way


...to encourage healthy eating.

If you've got a fussy eater in the family, a behaviour reward chart can be a great way to get them eating and enjoying new foods and more fruit and veg.

Praise from parents or the offer of small rewards is a good motivator for many children.

A behaviour reward chart can work wonders too. Remember to decide on rewards and goals in advance and keep them realistic and motivating.

Want more great tips and strategies to overcome fussy eating? Register for a Fruit & Veg Sense workshop online: eatittobeatit.com.au



Find this chart and others online too.

For more information visit
www.eatittobeatit.com.au
or join us at facebook.com/eatittobeatit



Library News

Welcome back everyone! I hope you have had a restful break. Welcome to all the new families, its lovely to see so many new faces. As usual the library will be bursting with activities for the children to embrace and love reading. I'm at school Monday, Tuesday, Wednesday and Thursday, feel free to pop in and have a chat about your child's reading.



Borrowing

Each class has a weekly 1 hour library and borrowing time. During this session the children are allowed to borrow 2 books for one week if they bring their library bag. This year in years 3-6, the students will also be borrowing for their home reading, which is part of their homework. The children are also allowed to borrow during the second half of lunch on Tuesday.

Class library days

Tuesday	Wednesday	Thursday
KW	KA	1/2H
K/1M	1/2G	1/2L
4/5M	3/4P	
5/6M	3/4D	

Library Bags

As mentioned the children need library bags to borrow books to take home. This bag does not have to be fancy as long as it is labeled. It can even be an old pillow case. We only ask that it not be a plastic bag for health and safety reasons.

Premiers' Readers Challenge

The challenge begins in February and finishes on the 1st of Sept and requires the children at different age groups to read a certain number of books from the list provided. All children will be participating during library and class time. The children in the K-2 classes will have the books read to them by their class teachers and recorded as a whole group. The 3-6 children will keep their own records during library time. The students will be starting their challenge next term. For more information about the challenge please see:

www.schools.nsw.edu.au/premiersreadingchallenge/index



Chess Club

The library is open the whole of lunchtime on Thursday for chess club. First term the children will be learning and anyone can come in and play. In second term the children will be asked to sign up for chess club and will be making a commitment to play each week. Occasionally the school will compete in outside events and the students in chess club will be asked to join these groups. If you have any questions concerning chess club please feel free to contact me at school on 96052459. The following article gives you an understanding of the benefits of your child playing chess.

http://www.nswjcl.org.au/Resources/Dauvergne/PD_paper.htm



Help Needed!!

Each Thursday I am in the library from 2pm-3pm and a number of parents come in to help tidy shelves before school pickup. Everyone is welcome and it is a great way to get involved and meet other parents, have a cuppa and check out a small adult library. It's also cool in the library and pre-schoolers are welcome too!



If you're not able to help at this time maybe you could come and help at another time or take books home to cover. Please feel free and come in and have a chat about when you're able to help.

Internet Safety and Usage

Bardia PS has a strong policy concerning the appropriate usage of the school internet by students. Each year we conduct sessions during ICT explaining how to use the internet safely and how students are to conduct themselves using computers including email at school and at home. We do not tolerate any bullying, if a student uses the computers or DET portal inappropriately parents will be contacted and they will lose their internet rights for the continuation of that school term. It is important that we send a strong message to our children concerning this matter. The students from grades 3-6 will be bringing home a contract which they have written explaining the appropriate behaviour we are expecting, including the use of communicating with peers through x-box live. If you are having issues concerning computer safety i.e. students over-use, safe web browsing, usage of x-box live please come and discuss it with myself or Mr Moseley. I will be able to help you change the settings on the computer that can lock out children at certain times of the day as well as other tricks to keep them safe. The following website gives excellent information and guidelines for children using computers and the internet.

<http://www.schoolatoz.nsw.edu.au/technology>



"There is more treasure in books than in the entire pirate's loot on Treasure Island." — Walt Disney

Happy Reading

Mrs. Kathy Wyber



The school has applied to become a member of the Amart All Sports Community Kickbacks Program. Customers of Amart All Sports can elect Bardia Public School to receive credits against purchases made.

You will need to join the Amart All Sports Team Amart Loyalty Program and nominate Bardia Public School as your "Relevant Participating Club or School".

You will receive a loyalty program card which must be swiped or selected when purchasing goods in store or on-line in order for the school to accrue credits. Once the school's credits reach \$2000 (ex GST) within a 12 month period the school will receive a 5% store credit (\$100).

This is a convenient way for the school to acquire sporting equipment for the benefit of all our students.

Bardia Public School
P & C Association

P&C NEWS



Bardia Public School P & C now on Facebook

"Like" our page to keep updated on:

1. Events happening at the school such as assemblies, Easter hat parades, cake days etc;
2. Fundraising events;
3. Uniform changes and updates;
4. Canteen changes – menu, new products, opening times;
5. Play group for parents and carers with children 5 years and under.

All that and more at <https://facebook.com/ingleburnnorth>

Canteen

The canteen is now open every day for lunch and closes at 12pm except for Wednesday when it will be also open at recess.

A wonderful way to be part of the school community is through volunteering. We currently have some amazing volunteers in our canteen to ensure we have canteen facilities for our students. No experience necessary. If you are able to donate any of your precious time, please contact the canteen or office staff. Your children also gain a sense of pride when their parent helps at the school.

ADVERTISEMENTS

Now enrolling
for 2016

Join our growing community

SIENNA
Art Space

We're expanding in 2016!

Weekly art classes on
Saturdays and Mondays!

New Youth Workshops!

Enrol today: Erin 0433 944 041

Forms available on the website.



Studio Classes in Drawing & Painting for Kids, Teens & Adults
Art Circuits for Kids - Youth Workshops - Women's Circle Workshops

SIENNA Art Space www.siennaartspace.com

NOTICES



First Holy Confession and Holy Communion

Catholic children in NSW state schools in Year 3 or over are due to be prepared to receive the Sacraments of Forgiveness and Holy Communion. An enrolment and information meeting for parents will be held on Monday 15th February at 7.30pm in the Parish Centre of the Holy Family Church, Oxford Road, Ingleburn. Baptism certificates are required for enrolment. For enquiries please contact Father Peter on 9605 2785.

SCHOOL ZONE PARKING OFFENCES

Current as at 1 July 2015



Means that in the area in the direction of the arrow, you must **NOT STOP your vehicle** at any point on the road or kerb, unless there is a medical or other emergency.

Maximum Penalty

\$425

+ 2 Demerit Points



Means that you have no more than 2 minutes for drop-offs or pick-ups of passengers or goods and the driver must stay within 3 metres of your vehicle.

Penalty

\$177

+ 2 Demerit Points

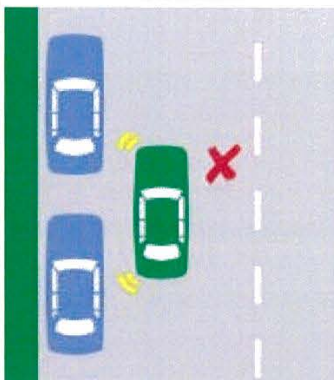


Means that in the direction of the arrow or arrows you are not allowed to stop your vehicle unless you are driving a bus.

Penalty

\$319

+ 2 Demerit Points



DOUBLE PARKING

You are **NOT PERMITTED** to stop or park your vehicle alongside another vehicle that is already parked parallel to the kerb.

Penalty

\$319

+ 2 Demerit Points

- STOP in a NO STOPPING zone: **\$319 + 2 Demerit Points**
- STOP on or near a Children's or Pedestrian Crossing (within 20m on approach & 10m on departure side of crossing): **\$425 + 2 Demerit Points**
- STOP on path/strip in built up area: **\$177 + 2 Demerit Points**

Please Note: fines subject to change without notice.

These penalties apply to offences in school zones only while the zone is active.

SCHOOL ZONE TRAFFIC OFFENCES

As at 1 July 2015



SPEEDING OFFENCES

School Zone speeding offences attract higher fine and demerit points than other speeding offences.

Maximum Penalty

\$3,740

+ 7 Demerit Points



MOBILE PHONE USE

Drive using a hand-held mobile phone in a School Zone.

Penalty

\$425

+ 4 Demerit Points



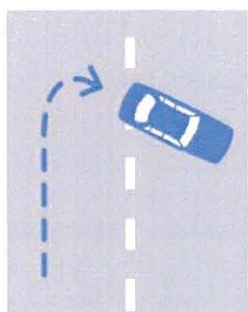
CHILDREN'S CROSSINGS

Disobey hand-held stop sign at Children's Crossing or approach Children's Crossing too quickly to stop safely.

Penalty

\$531

+ 4 Demerit Points



U-TURNS

Make a U-Turn without giving way to pedestrian or vehicle in a School Zone

Penalty

\$425

+ 4 Demerit Points

For a full list of all new penalties and offences, please visit:
www.rms.nsw.gov.au or phone the RMS on: 13 22 13

Please Note: fines subject to change without notice.

These penalties apply to offences in schools zones only while the zone is active.